

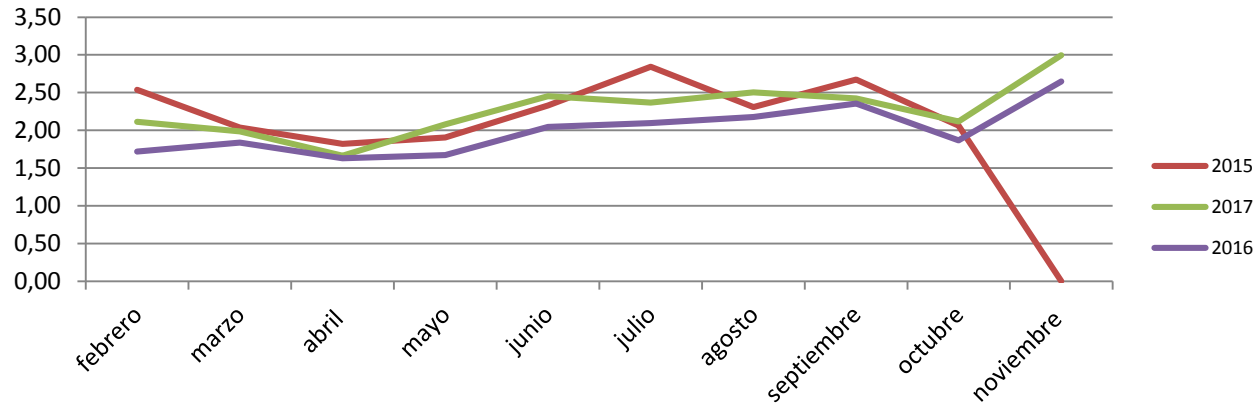
# Sustainability Goals 2018

- Reduce use of energy per stay in relation to 2017.
- Reduce use of water per stay in relation to 2017.
- Consolidate MSH´ s Social Commitment by launching 1 new regular initiative each year.
- Boost client satisfaction regarding corporate environmental policies..
- Reduce the use of chemical products at MSH both hotels in relation to 2017.
- Promote the involvement of customers and partners in the sustainable management of the environment.

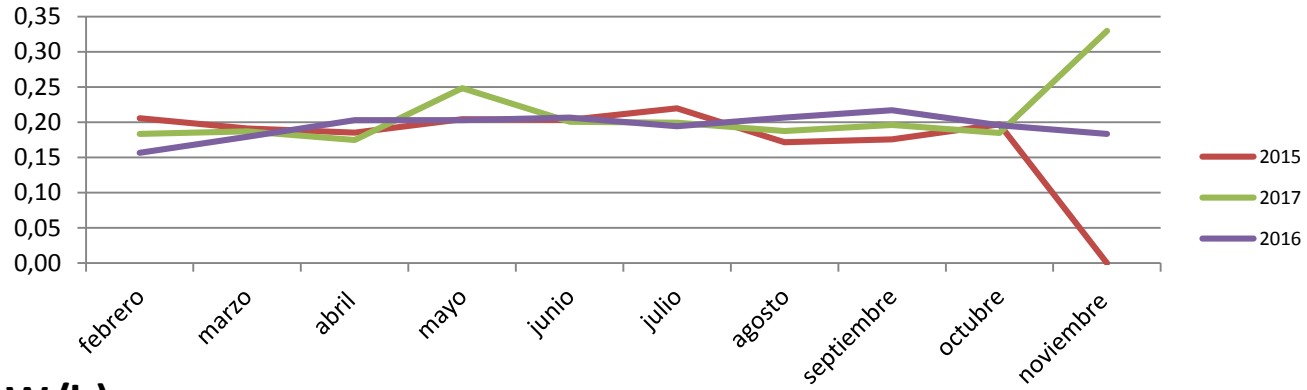
MYSEAHOUSE  
PLAYADEPALMAHOTELS

MYSEAHOUSE  
NEPTUNO  
★★★★

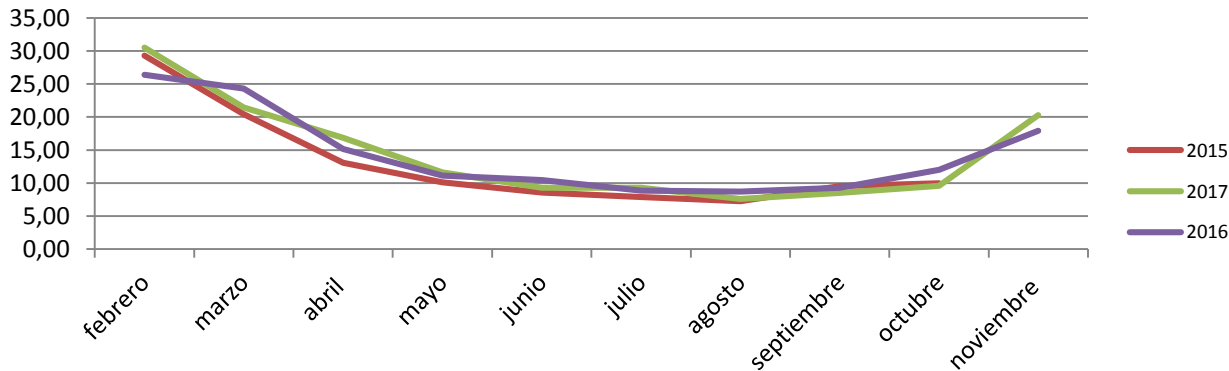
Evolution Electricity consumption (kW/h)



Evolution water consumption (m3)



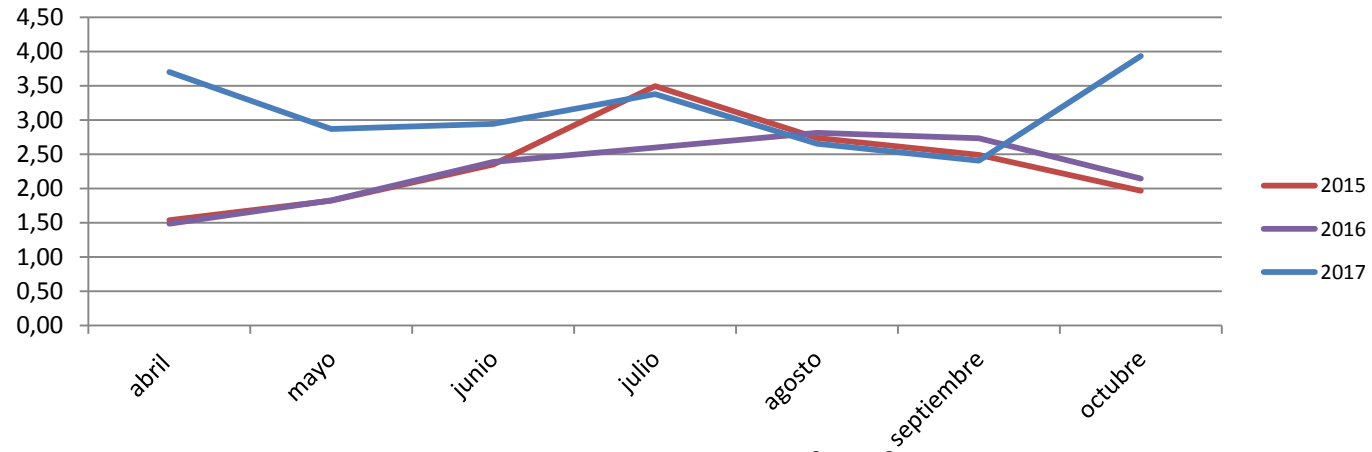
Evolution Gas consumption (kW/h)



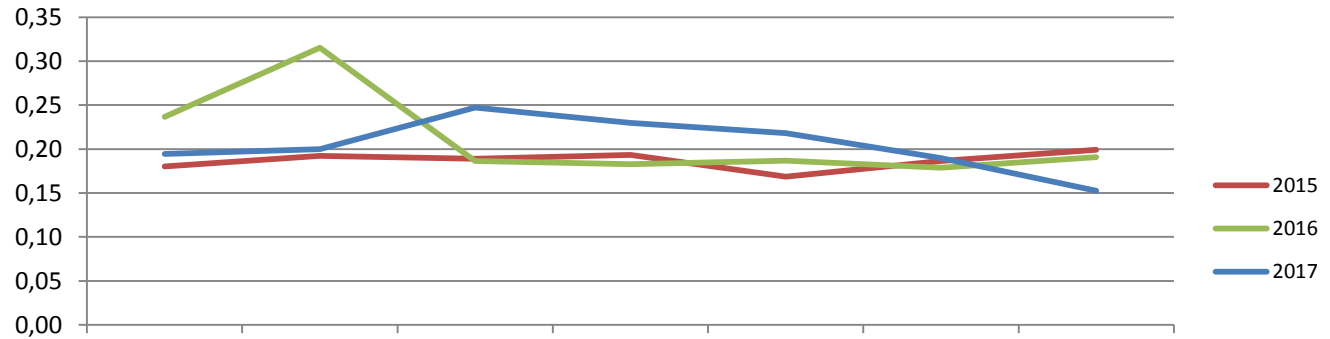
MYSEAHOUSE  
PLAYADEPALMAHOTELS

MYSEAHOUSE  
FLAMINGO  
★★★★SUP

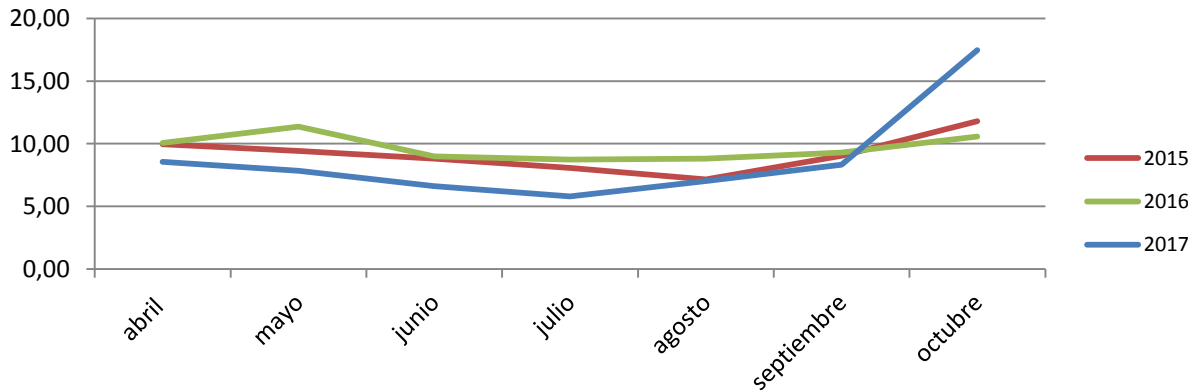
Evolution Electricity consumption (kW/h)



Evolution water consumption (m3)



Evolution Gas consumption (kW/h)



## VOLÚMENES DE LAS BASURAS RECOGIDAS/VOLUME OF COLLECTED WASTE - PER GUEST

TIPO BASURA (L)	2014	2015	2016	2017
ORGÁNICO/ORGANIC	1,37	2,54	2,28	2,48
RECHAZO/WASTE	6,05	9,53	10,52	11,24
ENVASES/PACKAGING	2,66	9,64	9,31	11,18
FARDOS CARTÓN/PAPER&CARDBOARD	0,00	0,01	0,01	0,01
CRISTAL/GLASS	0,51	0,57	0,57	0,33

## VOLÚMENES DE LAS BASURAS RECOGIDAS/VOLUME OF COLLECTED WASTE - PER GUEST

TIPO BASURA (L)	2014	2015	2016	2017
ORGÁNICO/ORGANIC	1,22	2,59	2,84	2,57
RECHAZO/WASTE	1,87	6,03	6,59	6,98
ENVASES/PACKAGING	1,24	2,57	2,57	2,34
FARDOS CARTÓN/PAPER&CARDBOARD	0,00	0,00	0,01	0,01
CRISTAL/GLASS	3,42	0,81	0,19	0,22

